



Engineering Success

Investor Presentation

FY23 Q3 Results

personal use only





Engineering Success

Who We Are

Civmec is a multidisciplinary heavy engineering and construction company, providing a broad suite of high-quality, integrated services to the Energy, Resources, Infrastructure, Marine and Defence sectors.

CONSTRUCTION

- » Site Earth Works
- » Structural Concrete Works
- » Structural, Mechanical and Piping (SMP)
- » Electrical, Instrumentation and Control (EIC)

MANUFACTURING

- » Shipbuilding
- » Modularisation
- » Heavy Engineering
- » Precast and Prestressed Concrete

MAINTENANCE AND CAPITAL WORKS

- » Refractory
- » Rope Access
- » Industrial Insulation
- » SMPE&I Maintenance



Engineering Success

Operating Sectors



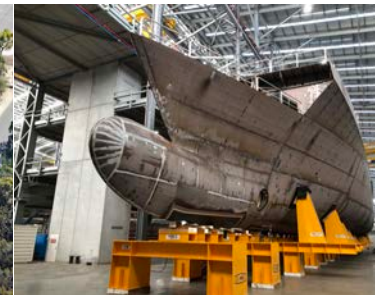
ENERGY



RESOURCES



INFRASTRUCTURE,
MARINE AND DEFENCE





Engineering Success

Our Facilities



Port Hedland



Gladstone



Henderson
WA



Newcastle



personal use only

West Coast Facility

HENDERSON
Western Australia



Our west coast fabrication and shipbuilding facility in Henderson, Western Australia, is the largest heavy engineering facility of its kind in Australia.

OVERVIEW

Situated just 30 kilometres south of Perth, the facility is strategically located on 200,000m² of land with direct waterfront access in the Australian Marine Complex (AMC) precinct. The AMC also provides access to a further 440,000m² of Common User Facility (CUF) land.

With more than 100,000m² of undercover area the facility includes:

- 53,000m² (usable floor area) assembly hall
- 29,300m² fabrication hall
- Two surface treatment (blast & paint) facilities, including one specifically capable of housing large material handling equipment and integrated modules.
- Two exotic metal facilities
- Site support logistics workshop
- Multi-storey main office building

East Coast Facility

NEWCASTLE

New South Wales



Our east coast facility is strategically located on 227,000m² of land, just 14 kilometres from the Port of Newcastle in New South Wales

OVERVIEW

With direct access to the Hunter River, the site offers 535m of prime river frontage, with two ship basins.

The facility includes:

- 15,000m² heavy engineering workshop
- 7,500m² precast/prestressed concrete facility
- Surface treatment facility
- Offices

Serviced by 24 overhead cranes, the facility has a single-lift capacity of 92 tonnes. The facility is capable of producing a throughput of 35,000 tonnes of steel per annum and can accommodate modules up to 22m wide and 136m in length.



Engineering Success

Gladstone Facility

GLADSTONE

Queensland



Set on around 3,000m² of land, our Gladstone facility is well positioned for our east coast shutdown and maintenance teams. The Port of Gladstone is the fifth largest multi-commodity port in Australia.

OVERVIEW

- Our Gladstone facility is well-positioned for east coast shutdown and maintenance teams with a large workshop, laydown area, office, and extensive equipment on site.
- Close proximity to Energy and Resources clients in north east Australia for rapid mobilization.
- The facility includes a 1,000m² workshop with overhead crane, 1,500m² laydown area, and office space.
- Supports major and minor works across Queensland, including fabrication, pipe fitting, coded welding, mechanical repairs, scaffolding, insulation, surface treatment, and refractory.



Engineering Success

Port Hedland Facility

PORT HEDLAND

Western Australia



The new Port Hedland facility is located on 50,000 m² of land in the Wedgefield industrial area of Port Hedland.

OVERVIEW

- Construction is underway in Wedgefield for a 5,000m² workshop and office development.
- Services will include: structural repairs/modifications and fabrication solutions, rotatable services and specialized fabrication (heavy structural welding).
- The Office facility will allow for technical, logistical, and administrative support for project and maintenance operations in the Port Hedland area.
- This new facility will provide cost and efficiency benefits for Energy and Resources clients in northwest Western Australia, whilst working in synergy with our Henderson headquarters.



Engineering Success

Financial Highlights





Engineering Success

Financial Highlights

↑↑ **9M REVENUE A\$606.6m** 4.2% increase from 9M FY22

↑↑ **EBITDA A\$80.4m** 21.4% increase from 9M FY22

↑↑ **NPAT A\$42.9m** 23.4% increase from 9M FY22

↑↑ **NPAT MARGIN 7.8%** for Q3 FY23 and **7.1%** for 9M FY23



Engineering Success

Financial Highlights

- ↑↑ **EARNINGS PER SHARE (A\$ cents)**
2.89c Q3 FY23 up from **2.42c Q3 FY22**
- ↑↑ **NET ASSET VALUE PER SHARE (A\$ cents)**
80.05c at Q3 FY23 up from **73.92c at FY22**
- ↑↑ **CASH GENERATED FROM OPERATIONS (A\$)**
\$67.7m 9M FY23 up from **\$13.9m 9M FY22**

personal use only



Engineering Success

Strong Performance

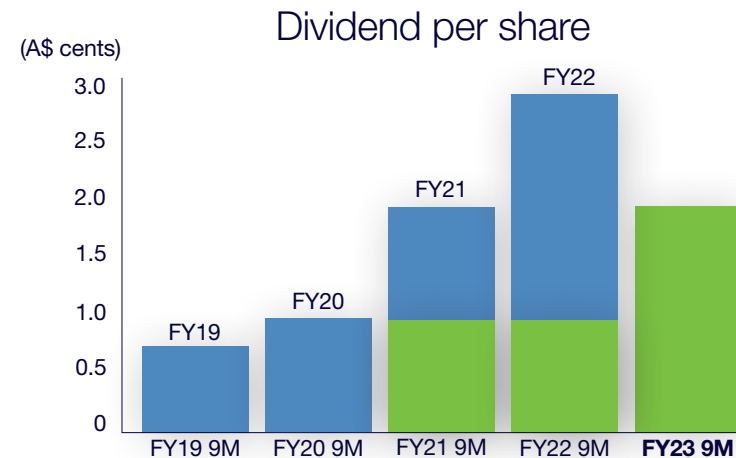
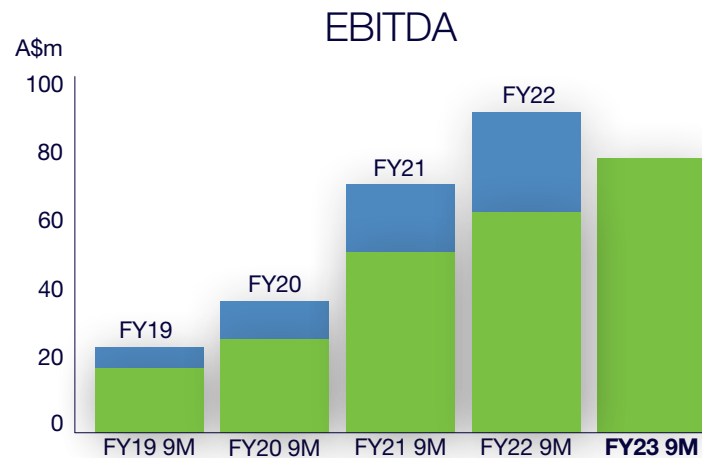
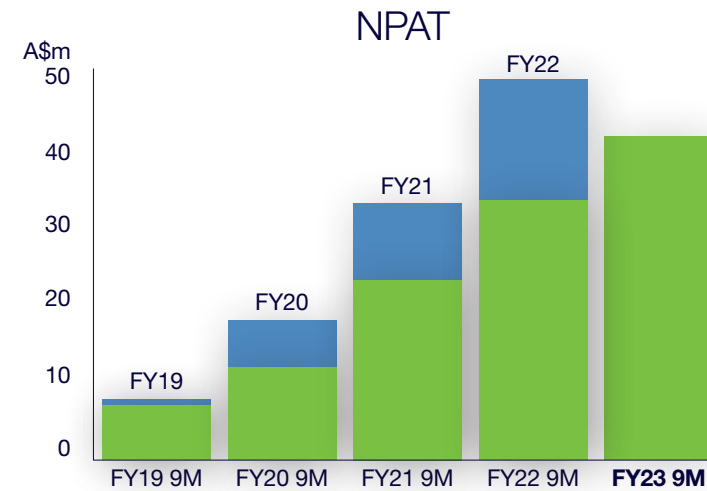
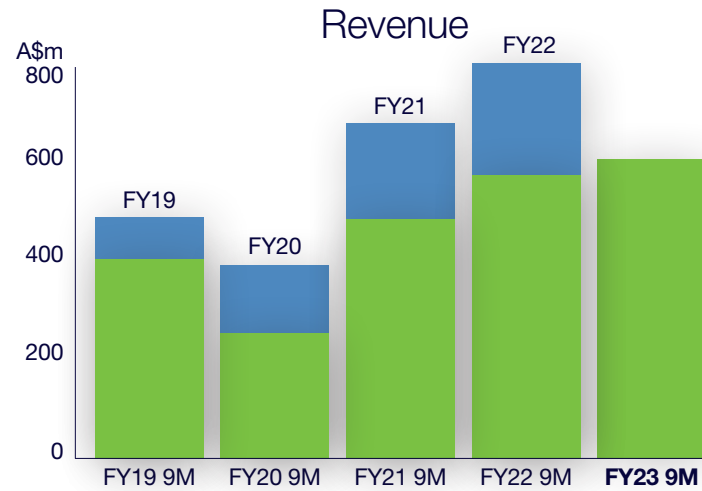
A\$ million	Q3 FY23	Q3 FY22	Change	9M FY23	9M FY22	Change
Revenue	\$187.8	\$192.9	-2.7%	\$606.6	\$582.3	4.2%
EBITDA	\$27.4	\$23.0	19.4%	\$80.4	\$66.2	21.4%
NPAT	\$14.6	\$12.1	20.2%	\$42.9	\$34.7	23.4%
Net Profit Margin	7.8%	6.3%	1.5 pp	7.1%	6.0%	1.1 pp
Cash Generated from Operations				\$67.7	\$13.9	387.1%
Net Asset Value per Share (A\$ cents)				80.05c	73.92c ⁺	8.3%
Earnings per Share (A\$ cents)	2.89c	2.42c	19.4%	8.49c	6.92c	22.7%
Order Book				\$1,189 (31 Mar)	\$1,178 (31 Dec)	0.9%

⁺ at 30 June 2022



Engineering Success

Continued Strong Performance





Engineering Success

Outlook *for* Growth

personal use only





Engineering Success

Engineering Success Future Growth Opportunities

- ▶ Civmec has a proven track record of performance and delivery.
- ▶ We have developed world class facilities and plan to capitalise on these during forecast strong market conditions.
- ▶ Order book of A\$1.2 billion.
- ▶ Tendering activity across all sectors remains buoyant for FY24 and beyond.
- ▶ Engagement with new and existing clients on future projects is strong.
- ▶ Publicly available information continually indicates that the opportunity pipeline is increasing across Australia for the medium term, well in excess of A\$330B previously disclosed.
- ▶ Current high level of client satisfaction with Bridge construction progress across NSW and WA.
- ▶ Traction being gained with increased scopes and new clients across Maintenance, notably with term agreements.
- ▶ Increased capacity to address resource constraints with streamlined immigration processing and overseas people sourcing.

Defence Strategic Review A\$8B Regional Investment

Growth opportunities

Release of the Defence Strategic Review

- On the 24 April the Albanese Government released the public version of the Defence Strategic Review, the Government's response to the Review, and the National Defence Statement 2023.
- Mr Albanese commented, "The Government will continue to invest in our capabilities and our relationships to help build a more secure Australia and a more stable and prosperous region."
- Civmec's Henderson site, which is positioned along side a further A\$8B redevelopment of HMAS Stirling and it's surrounding facilities is a strategic advantage.
- Knowledge and experience gained throughout the ongoing OPV contract is critical in future reviews and opportunities.
- The Henderson Precinct, plays a crucial role with regard to naval sustainment, maintenance and upgrade of our naval vessels, as well as the construction of smaller surface vessels.
- Government has agreed "LAND 8710 Phases 1-2 – Army Littoral Manoeuvre Vessels (Landing Craft Medium and Heavy) should be accelerated and expanded immediately".



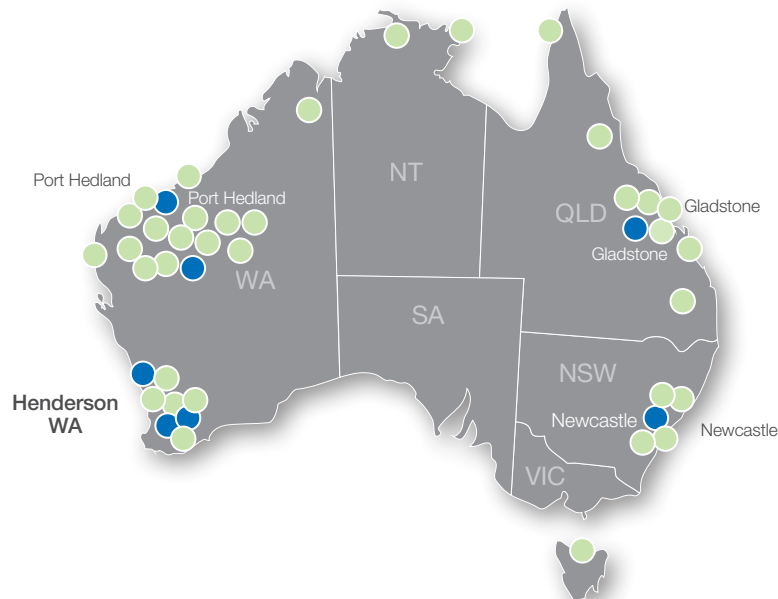
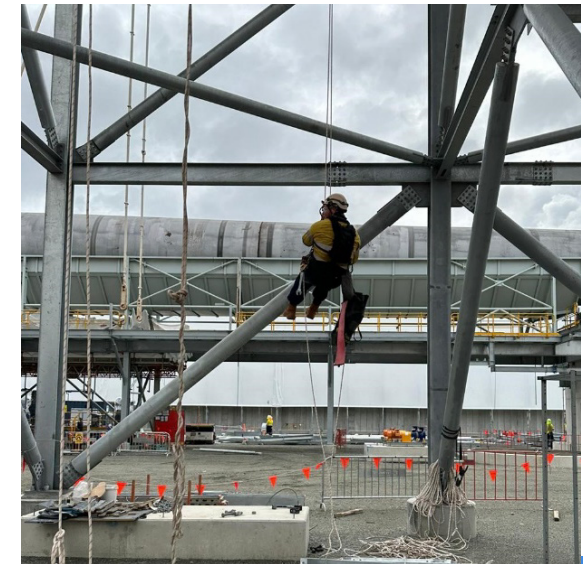
personal use only

Maintenance & Capital Works

Growth opportunities

Major Shutdowns, Pre-shutdowns & Maintenance

- Civmec Rope access teams were engaged to provide an innovative access solution at Covalent Lithium plant, as well as across many sites providing significant access efficiencies.
- Our maintenance and shutdown team continue to go from strength to strength at Roy Hill with our largest shutdown to date currently underway.
- The service offering is also expanding to include scaffolding, rope access, specialist mechanical services and NDT (Non destructive Testing).



- Pre works are currently under way at QAL for a significant up coming shut down. Full multidisciplinary services including; mechanical, scaffold, refractory, crange, and fabrication.

- Existing client projects
- Opportunities for growth & expansion with recent term agreement awards

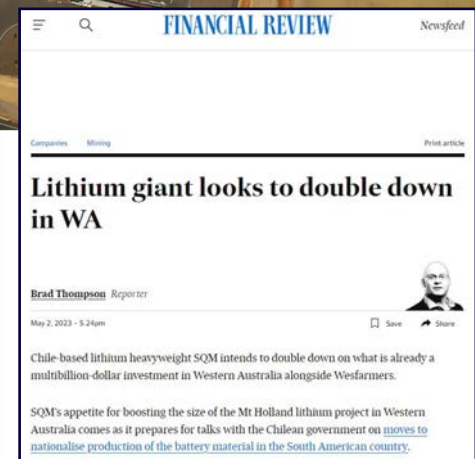
personal use only

Lithium Leading the Energy Transition

Growth opportunities

New Energy Projects

- Civmec continues to provide services to the energy transition and renewables market.
- Three contracts have been secured on trains 3 and 4 of Albemarle's Kemerton Lithium Refinery. These contracts are for civil works onsite and offsite manufacture of 25 carbon steel tanks and eight kilns.
- Civmec is well positioned to continue a diversified portfolio of new energy project work.
- Civmec has acquired knowledge and experience of new technologies that enable us to assist and offer decarbonisation pathways for our client projects and future energy solutions.
- Renewables and new energy projects set to increase year on year.



personal use only

Government Infrastructure

Growth opportunities

Bridges

- Civmec continues to provide services to the Government Infrastructure sector.
- These projects include the delivery of bridge girders for several Transport for NSW projects including the Sydney Gateway project near Sydney airport.
- Civmec have significantly advanced the design and engineering and has commenced the on-site construction of the Causeway Pedestrian and Cyclist Bridges Project, a contract being delivered together with Civmec's construction and engineering partners as well as Main Roads Western Australia.
- The company has been awarded a fabrication package to support the replacement of a flood damaged bridge in WA.



personal use only



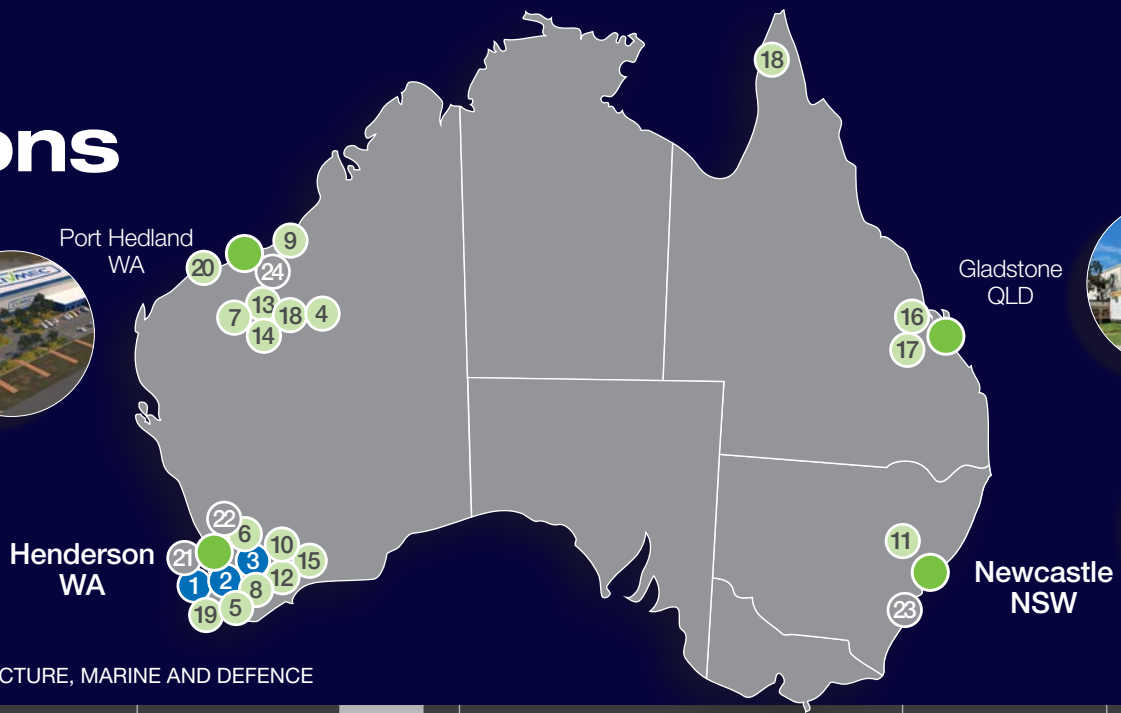
Engineering Success

Our Projects Update

use only
person



Project Locations



■ ENERGY
 ■ RESOURCES
 ■ INFRASTRUCTURE, MARINE AND DEFENCE

	PROJECT	CLIENT/OWNER	LOCATION
1	Scarborough Project – subsea structures	Subsea7 executed by Subsea Integration Alliance	Henderson, WA
2	SCMS Project - manifold and foundations	Baker Hughes for Chevron	Henderson, WA
3	Five-year term agreement, with two one-year extension options	Woodside Energy	Henderson, WA
4	Western Range Project	Rio Tinto	Paraburdoo, WA
5	Kemerton Lithium Project	Albemarle Lithium	Kemerton, WA
6	Nelson Point Car Dumper 3 (CD3) Replacement Project	BHP	Henderson, WA
7	Port Debottlenecking Project Stage One (PDP1) – civils and bulk earthworks	BHP	Pilbara, WA
8	Lithium Refinery Project	Covalent Lithium	Kwinana, WA
9	Iron Bridge Magnetite Project - SMPE&I	Iron Bridge JV (IBJV)	Marble Bar, WA
10	Iron Bridge Magnetite Project - module fabrication CV truss and trestles	Iron Bridge JV (IBJV)	Henderson, WA
11	Dumper tray bodies	DT Hiload, Duratray International Pty Ltd, and Austin Engineering	Newcastle, NSW
12	Calciner maintenance, major overhaul and repair services	Alcoa Australia	Pinjarra, Wagerup and Kwinana, WA

	PROJECT	CLIENT/OWNER	LOCATION
13	Site engineering panel, maintenance and upgrades	BHP	Pilbara, WA
14	Maintenance works	Fortescue Metals Group	Pilbara, WA
15	Maintenance and capital works at Boddington gold mine	Newmont	Boddington, WA
16	Mechanical and maintenance work to support shutdowns	Queensland Alumina Limited	Gladstone, QLD
17	Maintenance and refractory term contract for Boyne Island Smelters (BIS), Yarwun Refinery and Weipa	Rio Tinto	Gladstone and Weipa, QLD
18	Maintenance agreement for shutdown and maintenance support services for fixed plant assets across the Roy Hill Port (Facility) and PSA (Mine)	Roy Hill	Pilbara, WA
19	Maintenance agreement for Greenbushes mine site	Talison, Lithium	Greenbushes, WA
20	Yara Fertiliser Plant - pre-turnaround work	Yara Fertilisers	Pilbara, WA
21	SEA 1180 Offshore Patrol Vessel Program	Luerssen Australia	Henderson, WA
22	Causeway Pedestrian and Cyclist Bridges	Main Roads WA	Perth, WA
23	Sydney Gateway Project SB31 Bridge and Viaduct	Transport for NSW	Newcastle, NSW
24	Civmec Port Hedland Facility Construction	Civmec	Port Hedland, WA





Engineering Success

Project Snapshot Energy

SCMS Project



CLIENT

Baker Hughes

LOCATION

Henderson, WA

DURATION

2022 - 2024

OVERVIEW

Civmec will deliver sub-sea modules to be integrated into Chevron's Jansz-lo Compression SCMS Project.

The project consists of a separate retrievable manifold module (SCMS Module), a mudmat foundation structure for the manifold module and a separate retrievable manifold module (SSPLR).

The SCMS will be located in approximately 1,400m water depth in the Jansz-lo gas field located around 200 kilometres offshore the northwestern coast of Western Australia.

<https://seawanderer.org/baker-hughes-to-deliver-scms-for-chevron-subsea-compression-project>

Project Snapshot Resources

Covalent Lithium Project



CLIENT

Covalent Lithium Pty Ltd

LOCATION

Kwinana Western Australia

DURATION

mid 2022 - 2024

OVERVIEW

The refinery will be located in Kwinana, Western Australia, near Civmec's facilities in Henderson.

The refinery will convert lithium concentrate into high-purity lithium hydroxide monohydrate.

The scope of work includes: structural and piping fabrication, SMP erection, refractory lining, insulation, and E&I installation works.

The refinery is expected to recover 75% of lithium in spodumene concentrate, producing 50,000 tonnes of battery-quality lithium hydroxide per year.

This amount of lithium hydroxide will enable production of approximately one million electric vehicles annually, supporting a greener future by reducing reliance on fossil fuels.

Project Snapshot Resources

Western Range



CLIENT

Rio Tinto

LOCATION

Paraburdoo, Pilbara region Western Australia

DURATION

mid 2023 - mid 2025

OVERVIEW

This iron ore project includes Greenfields and Brownfields scope with the construction of a new Run of Mine (ROM) pad, primary crushing facility, overland conveying circuit and modifications to the Coarse Ore Stockpile (COS) and downstream conveying system.

To tie into the existing plant, the Brownfields scope includes extensive modifications to the current Paraburdoo COS and downstream conveying system. This includes addition of new feed points at the COS, new ore transfer equipment, conveyor replacements, conveyor upgrades, drive replacements and a range of other general modifications to receive the new ore stream.

Project Snapshot Infrastructure

Causeway Pedestrian & Cyclist Bridges



CLIENT

Main Roads WA (MRWA)

LOCATION

Perth, WA

DURATION

April 2022 - Late 2024

OVERVIEW

The project comprises two cable-stayed bridges and approach embankments and connects Victoria Park foreshore with Heirisson Island and the Perth CBD. The completed bridges will be approximately 1,000 metres long and 6 metres wide. The scope includes the completion of the architectural and engineering design; fabrication and transportation to site of approximately 1,500 tonnes of complex steel structures; ground preparation, earthworks and piling for approach embankments; in-river works, including piling, pile caps and pylon structures; and structural erection and electrical installation. The contract will be delivered in an integrated alliance with Civmec, Seymour Whyte Constructions, WSP and MRWA.



Engineering Success

Engineering Success

Environmental, Social & Governance Activities



personal use only

Recent ESG Activities

- Continued electrification of equipment with replacement of old diesel-powered lighting towers with solar lighting towers at Civmec construction sites.
- The Group’s employees participated in Clean Up Australia Day for the fifth year to tidy up the surrounding streets of the facilities in Henderson (Western Australia) and Newcastle (New South Wales).
- On St Patrick’s day, staff were invited to ‘go green for St Pat’s’ to raise funds for the St. Patrick’s Community Support Centre in Fremantle (Western Australia).
- Upcycling of e-waste by donating old computers and related tech equipment to the Wanneroo Community Men’s Shed in order to provide underprivileged members of society with access to technology and opportunities to learn new skills.



personal use only

Recent ESG Activities

- Civmec Team members had the privilege of attending a truly inspiring presentation by Tony Shaw, an Aboriginal leader. Tony, the founder of Indigenous Services Australia, was joined by his colleague Carola Verschuren, to share their vision of creating awareness and empowering Aboriginal people to walk beside others. Tony's leadership in true reconciliation comes from his own journey of cultural awareness, which he shared through the wisdom of his stories.
- Keynote presentation by Dana Hooker at Henderson facility for International Women's Day. Dana is an AFLW football star who shared experiences and wisdom from working in a male-dominated profession.
- Civmec is proud to have been extensively involved in various recycling exchange programs. Through these initiatives, the proceeds support our chosen charity St. Patrick's Community Support Centre in Fremantle, who are dedicated to supporting people who are experiencing homelessness.



personal use only



Engineering Success

Engineering Success

We will maintain our efforts to pursue long-term growth and sustainability, targeting repeat-order opportunities and constantly striving to strengthen our balance sheet, increase revenue and profits.

personal use only



Engineering Success

Disclaimer

This presentation has been prepared by the management of Civmec Limited (the Company) for the benefit of brokers, analysts and investors and not as any specific advice to any particular party or person. The information is based on publicly available information, internally developed data and other sources. Where an opinion is expressed in this document, it is based on assumptions and limitations mentioned herein and is an expression of present opinions only.

This presentation contains forward looking statements that are subject to risk factors associated with construction businesses. While Civmec considers the assumptions on which these statements are based to be reasonable, whether circumstances actually occur in accordance with these statements may be affected by a variety of factors. These include, but are not limited to, levels of actual demand, currency fluctuations, loss of market, industry competition, environmental risks, physical risks, legislative, fiscal and regulatory developments, economic and financial market conditions in various countries and regions, political risks, project delay or advancement, approvals and cost estimates. These could cause actual trends or results to differ from the forward looking statements in this presentation.

References to dollars, cents or \$ in this presentation are to Australian currency unless otherwise stated. References to "Civmec", "the Company", "the Group", or "the Civmec Group" may be references to Civmec Limited or its subsidiaries.
Authorised for release to ASX and SGX by Pat Tallon, CEO.

personal use only

